

## COMPANY-WIDE QUALITY & PRODUCTIVITY MANAGEMENT

### 1. PURPOSE OF THE COURSE

(1) To enable participants to continuously improve their intended organizations by applying management tools obtained from model organizations by driving Plan · Do · Check · Action (PDCA) cycle while making most use of their homeland tradition and practices.

(2) To obtain knowledge and skills on tools for efficiency improvement, value creation, profit maximization and supporting activities with focus on quality and productivity improvement and to understand how to make respective management system workable by use of those tools and PDCA cycle.

### 2. TRAINING PROGRAM

(1) General Orientation and Japanese Language Program

The General Orientation and Japanese language program are organized at the Chubu International Center of JICA prior to the technical training to assist the participants in understanding Japan and adjusting themselves to life in Japan, and thus to facilitate effective training.

(2) Technical Training

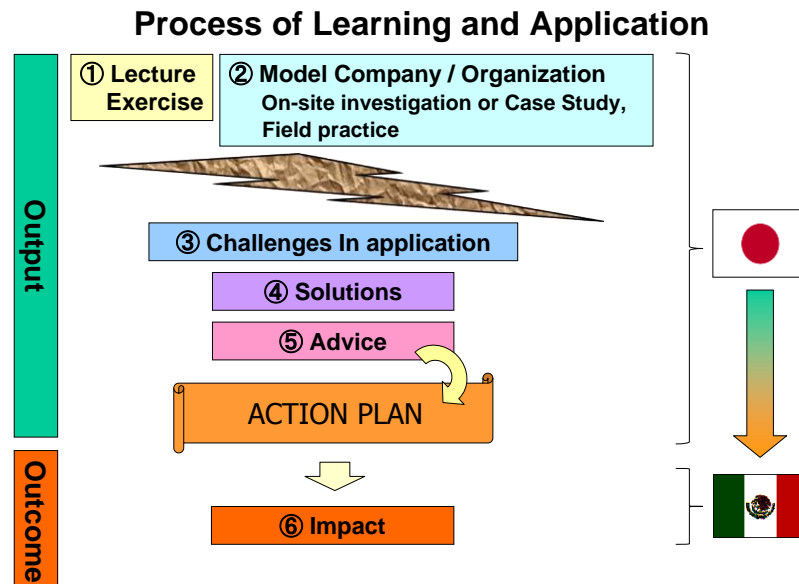
A. Process of Learning and Application

1) Output (Learning): Evaluated by Understanding Level

- ① Lecture and exercise by faculty
- ② Demonstration of Model Company/Organization (on-site investigation or case study, field practice) by faculty

2) Output (Trial of Application): Evaluated by Applicability Level

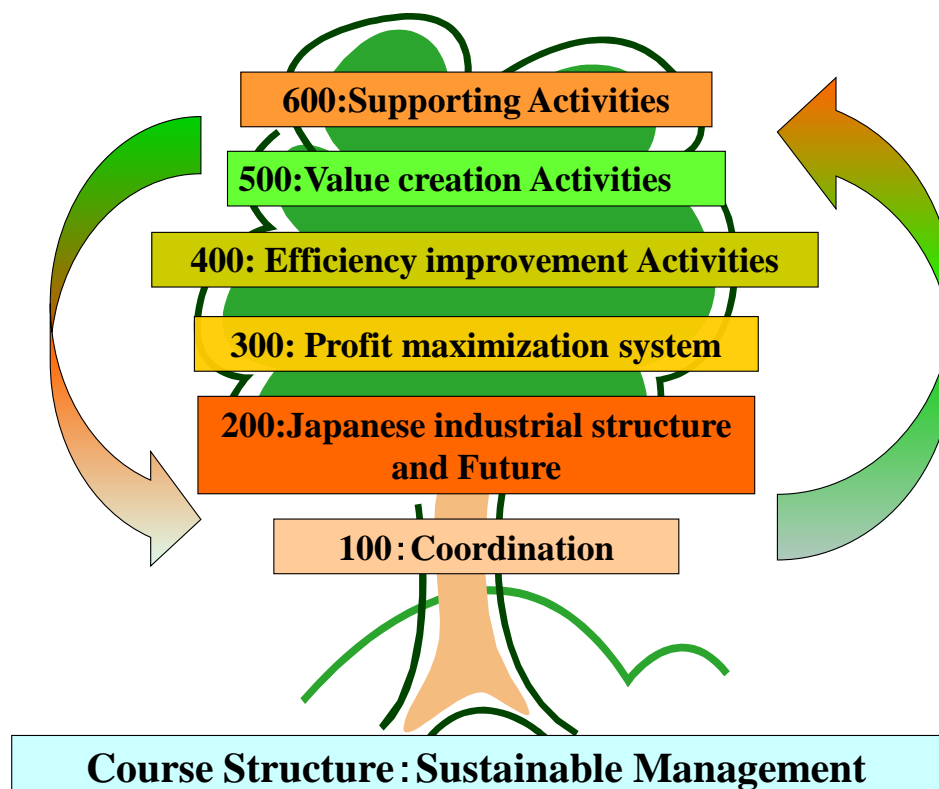
- ① Identification of possible challenges to be overcome in applying learned knowledge and skills to the participants' intended organization
- ② Working out any solutions in face of the challenges
- ③ Advice given by faculty



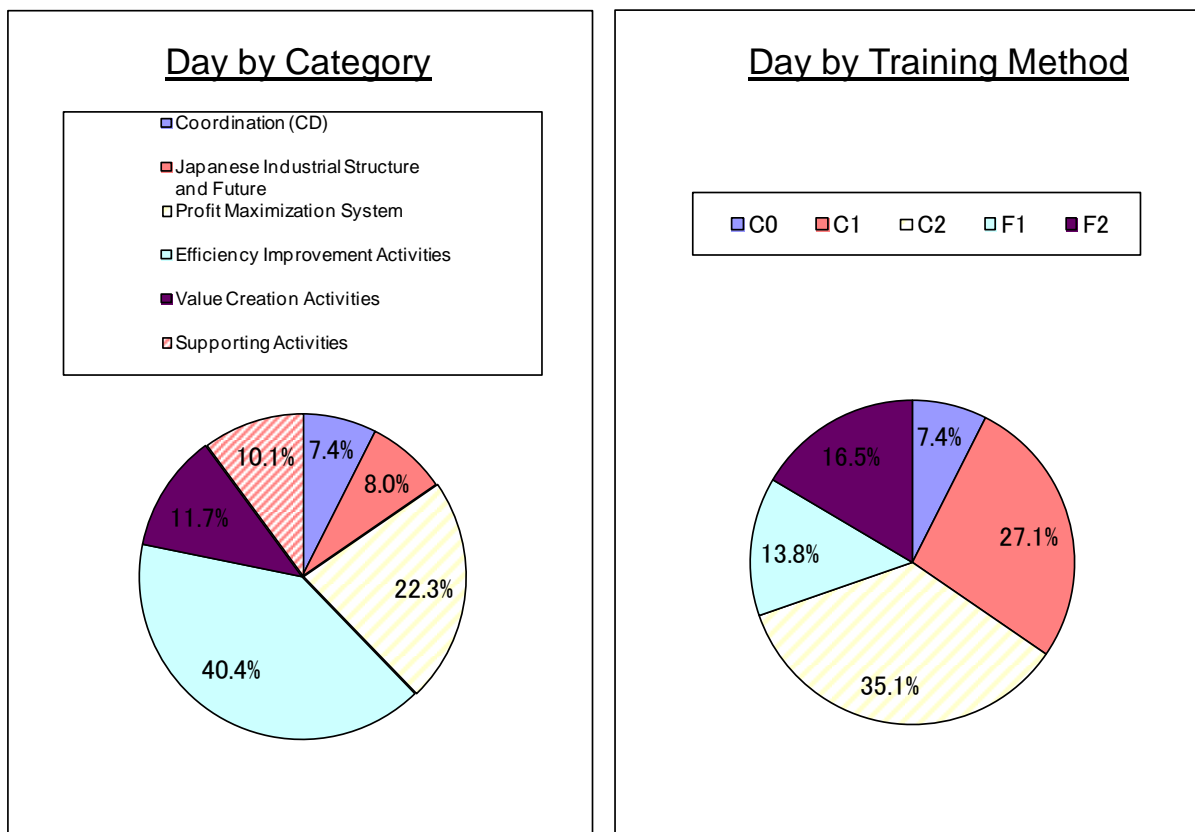
B. Individual Study Report

Each participant will complete an “Individual Study Report” during the course and make a presentation at the end of training. This process is considered as “Action Plan” to accomplish their outcome.

### C. Curriculum Structure



#### D. Allocation of Training Days by Category & Method



\* Above figures are subject to minor change.

### 3. NUMBER OF PARTICIPANTS TO BE ENROLLED

Maximum 12 persons

### 4. TRAINING DURATION from March 10, 2015 to September 18, 2014

#### (1) Briefing

March 10, 2015

#### (2) General Orientation

From March 10 to 13, 2015

#### (3) Japanese Language Program

From March 16 to May 6, 2015

#### (4) Technical Training

From May 7 to September 18, 2015

## **5. TRAINING INSTITUTION**

### **(1) General Orientation/Japanese Language Program**

Chubu International Centre (JICA CHUBU), JICA  
4-60-7, Hiraike-cho, Nakamura-ku, Nagoya, 453-0872, Japan  
Tel: +81-52-533-0220 Fax: +81-52-564-3751  
URL: <http://www.jica.go.jp/english/contact/domestic/map/chubu.html>

### **(2) Technical Training**

Chubu International Centre(JICA CHUBU), JICA  
4-60-7, Hiraike-cho, Nakamura-ku, Nagoya, 453-0872, Japan  
Tel: +81-52-533-0220 Fax: +81-52-564-3751  
URL: <http://www.jica.go.jp/english/contact/domestic/map/chubu.html>

## **6. CONDITION OF APPLICATION**

- (1) Applicants should be those who have more than three (3) years of occupational experience and are engaged in the field of production management and quality control at present, or are going to be engaged in this field in the near future in any industry. More experience on respective field is preferable.
- (2) Applicants should be those who are graduated from university or have the equivalent background.
- (3) Applicants must have an adequate ability in English conversation to be able to perform satisfactorily in the course.
- (4) Applicants should be between twenty-six (26) and forty-five (45) years of age.
- (5) Applicants must be of sound mind and body. Pregnant women can not be accepted.
- (6) Applicants must not be presently serving in the military.